



Fast Track wound healing and improve nutrition compliance with Expedite, a unique, ready-to-drink nutrition supplement with a blend of collagen dipeptides and L-Citrulline.

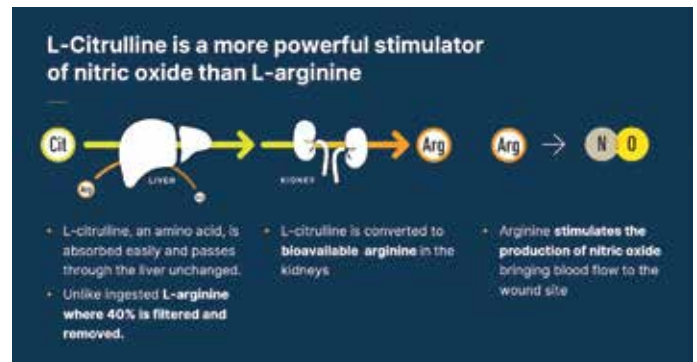
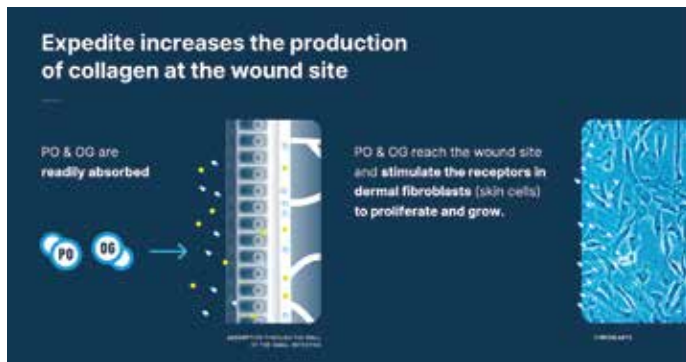
Expedite is a once-a-day, 2-ounce wound healing product that will revolutionize the way you nutritionally manage wounds and pressure injuries.

A blend of highly concentrated collagen dipeptides (Prolyl-Hydroxyproline (PO) and Hydroxyprolyl Glycine (OG)) and L-Citrulline, Expedite delivers 30 times the dipeptides of regular collagen. Expedite enhances collagen synthesis and nitric oxide production to fast-track the healing process.

Mango Peach Expedite

NN18800 48/2 fl oz bottles \$216.00

NN18800-12 12/2 fl oz bottles \$ 58.00



REFERENCES:

Sugihara F, Inoue N, Venkateswarathirukumara S. Ingestion of bioactive collagen hydrolysates enhanced pressure ulcer healing in a randomized double-blind placebo-controlled clinical study. *Sci Rep.* 2018;8(1):11403. Published 2018 Jul 30. doi:10.1038/s41598-018-29831-7

Inoue N, Sugihara F, Wang X. Ingestion of bioactive collagen hydrolysates enhance facial skin moisture and elasticity and reduce facial ageing signs in a randomized double-blind placebo-controlled clinical study. *J Sci Food Agric.* 2016 Sep;96(12):4077-81. doi: 10.1002/jsa.7606. Epub 2016 Feb 10. PMID: 26840887.

Sugihara, Fumihito & Inoue, N. & Wang, X.. (2015). Clinical effects of ingesting collagen hydrolysate on facial skin properties: A randomized, placebo-controlled, double-blind trial. *Japanese Pharmacology and Therapeutics.* 43. 67-70.

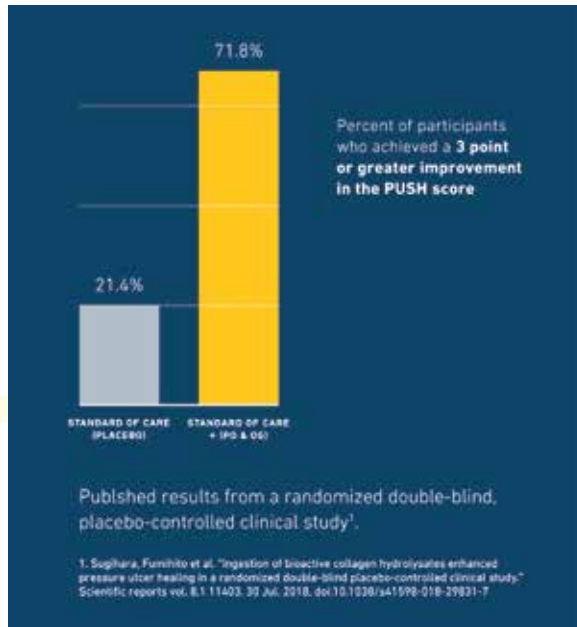
Kimira, Yoshifumi & Ogura, Kana & Taniuchi, Yuri & Kataoka, Aya & Inoue, Naoki & Sugihara, Fumihito & Nakatani, Sachie & Shimizu, Jun & Wada, Masahiro & Mano, Hiroshi. (2014). Collagen-derived dipeptide prolyl-hydroxyproline promotes differentiation of MC3T3-E1 osteoblastic cells. *Biochemical and Biophysical Research Communications.* 453. 10.1016/j.bbrc.2014.09.121.

CLINICAL SUPPORT EVIDENCE

Significant Improvement in PUSH Score

Study demonstrated: 71.8% of participants experienced significantly increased wound healing, as assessed by PUSH scores after 16 weeks.

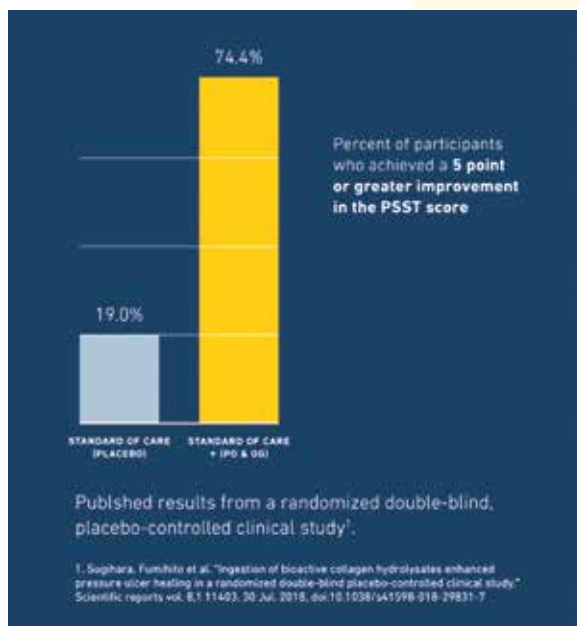
At least 3X more participants achieved PUSH Score efficacy benchmarks than the control group who received standard care alone.



Significant Improvement in PSST Score

Study also demonstrated: 74.4% of participants experienced significantly increased wound healing, as assessed by PSST scores after 16 weeks.

Almost 4X more participants achieved PSST Score efficacy benchmarks than the control group who received standard care alone.



FEATURES AND SPECIFICATIONS

Kcal/mL..... 1.66

When mixed in 120 mL of water

Caloric Distribution (% of kcal)

Protein 40%
 Carbohydrate 60%
 Fat..... 0%

Dipeptides:

Prolyl-Hydroxyproline-PO, Hydroxyprolyl Glycine-OG

Amino Acid:

L-Citrulline

Storage: Serve immediately after opening.

Shelf Life: 24 months

Not a sole source of nutrition.

Use under medical supervision.

NOT FOR PARENTERAL USE

Dosing and Administration

Oral: 1 bottle can be taken directly or poured into cup depending upon patient/ resident need/ preference. No mixing/diluting required.

Tube Feeding: Pour 1-60 mL bottle of Expedite™ into a cup. Mix with 30 mL water, stir to combine/disperse. Syringe mixture and infuse through feeding tube slowly. Flush tube with 30 mL water before and after administration.

* Product dosing should be based on clinical discretion and specific patient need.

Ingredients: Water, Sucrose, Hydrolyzed Collagen Peptides, L-Citrulline, Malic Acid, Natural Mango Flavor, Citric Acid, Natural Peach Flavor, Sodium Benzoate and Potassium Sorbate (preservatives), L-Tryptophan, Organic Stevia Leaf Extract.

Ordering information

Mango Peach Expedite

NN18800 48/2 fl oz bottles \$216.00

NN18800-12 12/2 fl oz bottles \$58.00

www.FoodserviceExpress.com

1-800-633-3438

Jeff Pribyl

email: jpribyl@med-diet.com

Nutrition Facts

1 serving per container

Serving Size: 1 Bottle (60mL)

Amount Per Serving

Calories 100

% Daily Values*

Total Fat 0g **0%**

Saturated Fat 0g **0%**

Trans Fat 0g

Cholesterol 0mg **0%**

Sodium 25mg **1%**

Potassium 25mg **0%**

Phosphorus 0mg **0%**

Total Carbohydrate 15g **5%**

Dietary Fiber 0g **0%**

Total Sugars 15g

Includes 15g Added Sugars **30%**

Protein 10g

Vit. D 0µg 0% • Calcium 4mg 0%

Iron 0mg 0%

* The % Daily Value (DV) tells you how much a nutrient in a serving of food contributes to a daily diet. 2,000 calories a day is used for general nutrition advice.

 **Medtrition**
 We help people feel better.™

Distributed by
 Foodservice Express